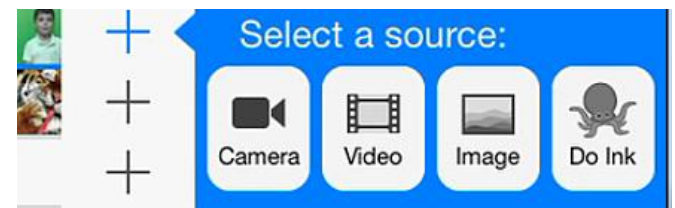


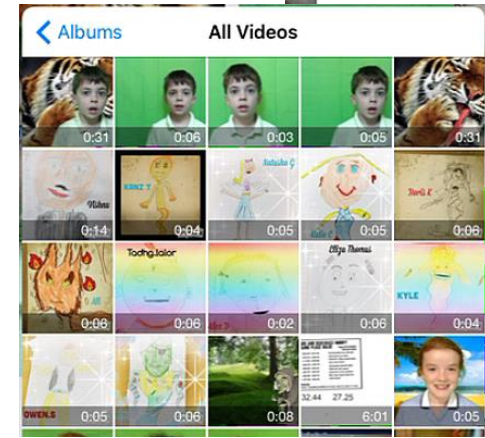
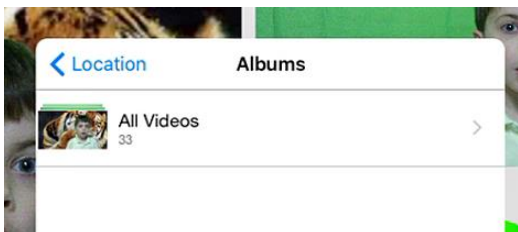


# Using the Green screen program to place a video in front of a background... (movie or image)

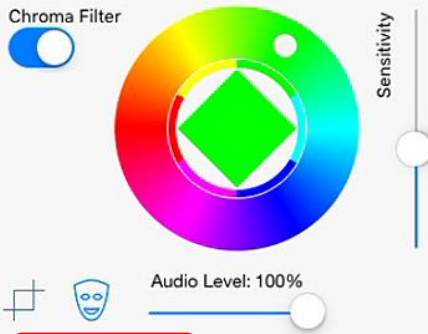
Click the + sign on the layer that you want to add content to. It's best getting it pre-recorded from the camera roll, although you can add video on the go using the camera tool if needed.



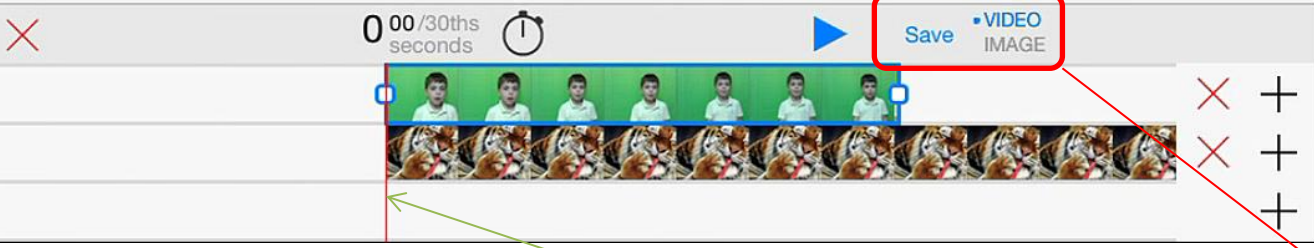
Select the video location



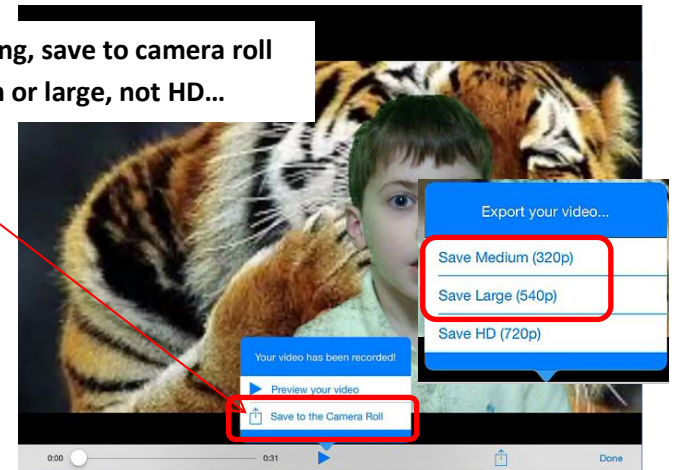
Choose the video to inset, click and it goes into the editing space (timeline)



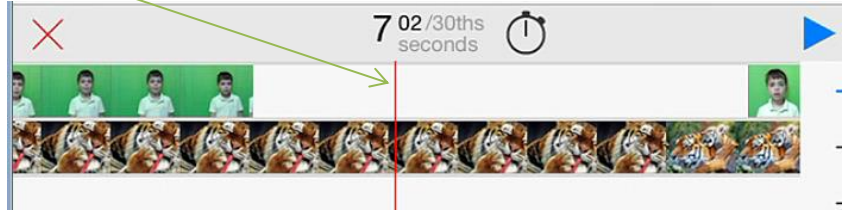
Audio Level: 100%



When saving, save to camera roll as medium or large, not HD...



Remember to put the green screen recording on the TOP layer, or you'll not see the background. Also remember to scroll to where you want the video adding, or it will replace the first one.. (The red line shows where the video will be added..)

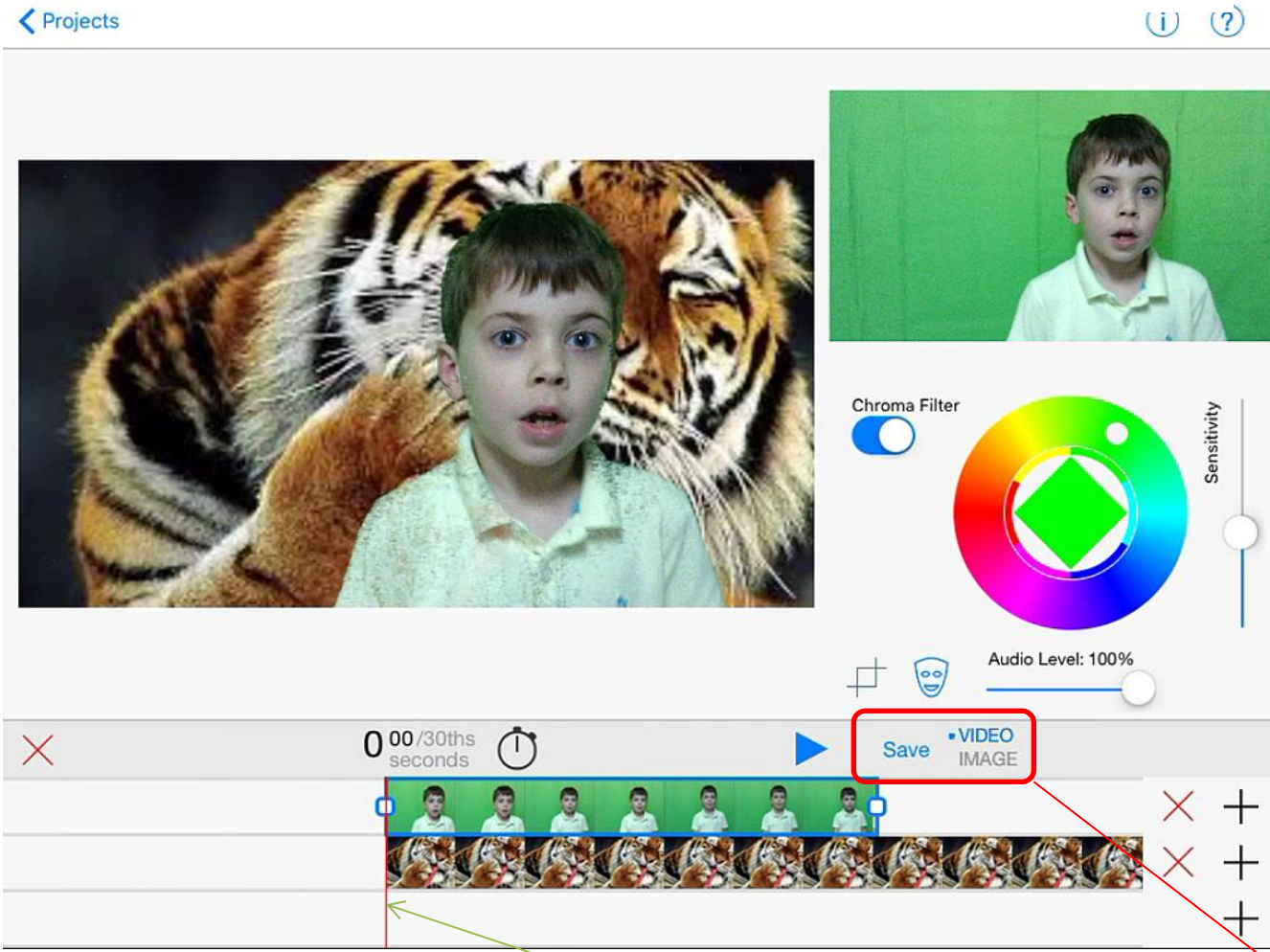


The middle layer can be a video or a photo, but it shows as the BACKGROUND for your movie, don't forget! Wherever your red line is, that is where content can/will be added but you can select and drag it after...

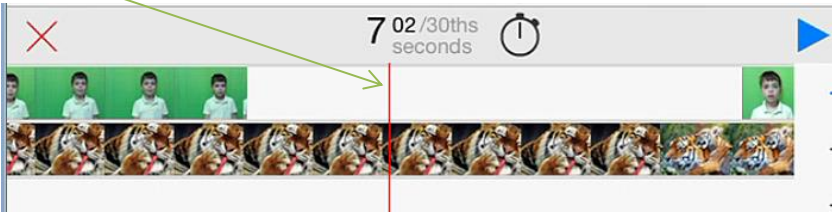




# Using the Green screen program to place a video in front of a background... (movie or image)

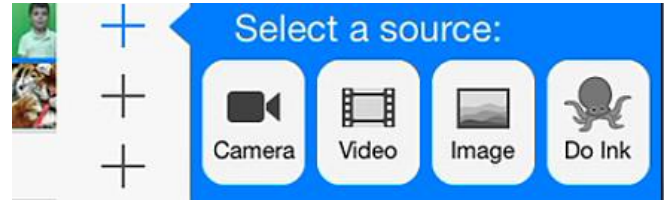


Remember to put the green screen recording on the TOP layer, or you'll not see the background. Also remember to scroll to where you want the video adding, or it will replace the first one.. (The red line shows where the video will be added..)

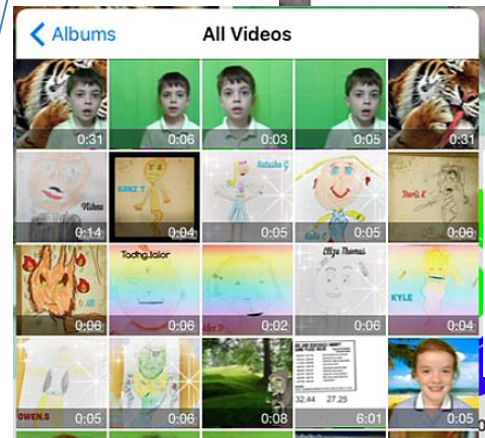
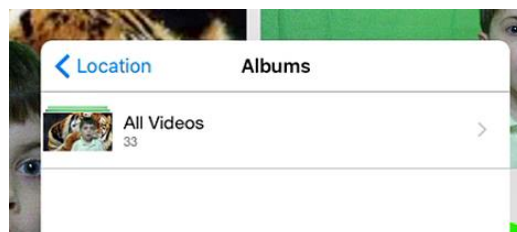


The middle layer can be a video or a photo, but it shows as the BACKGROUND for your movie, don't forget! Wherever your red line is, that is where content can/will be added but you can select and drag it after...

Click the + sign on the layer that you want to add content to. It's best getting it pre-recorded from the camera roll, although you can add video on the go using the camera tool if needed.



Select the video location



Choose the video to inset, click and it goes into the editing space (timeline)

When saving, save to camera roll as medium or large, not HD...

